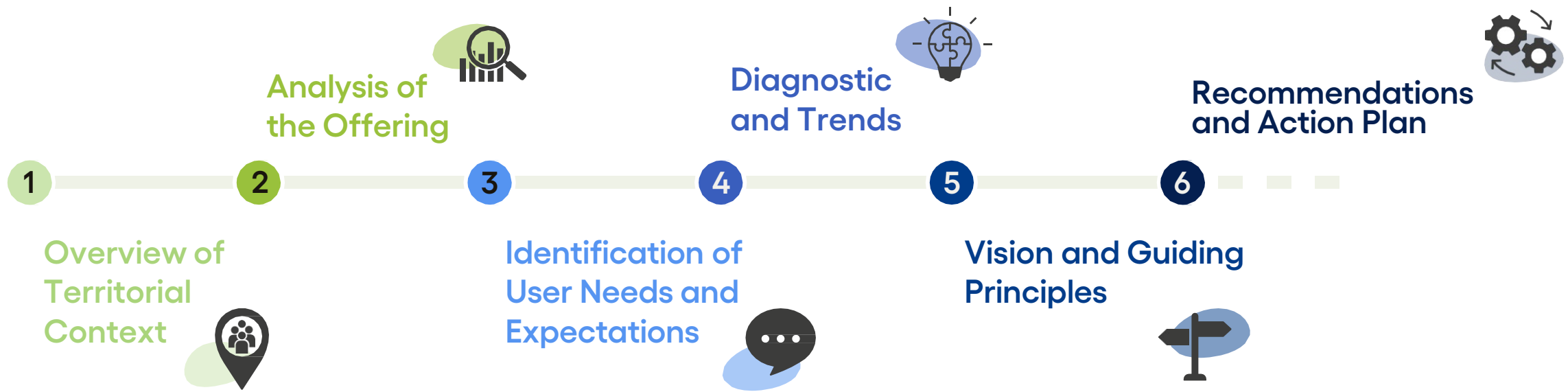


# Parks and Green Spaces Masterplan

October 2024



# APPROACH



# Location and Type of Parks and Green Spaces

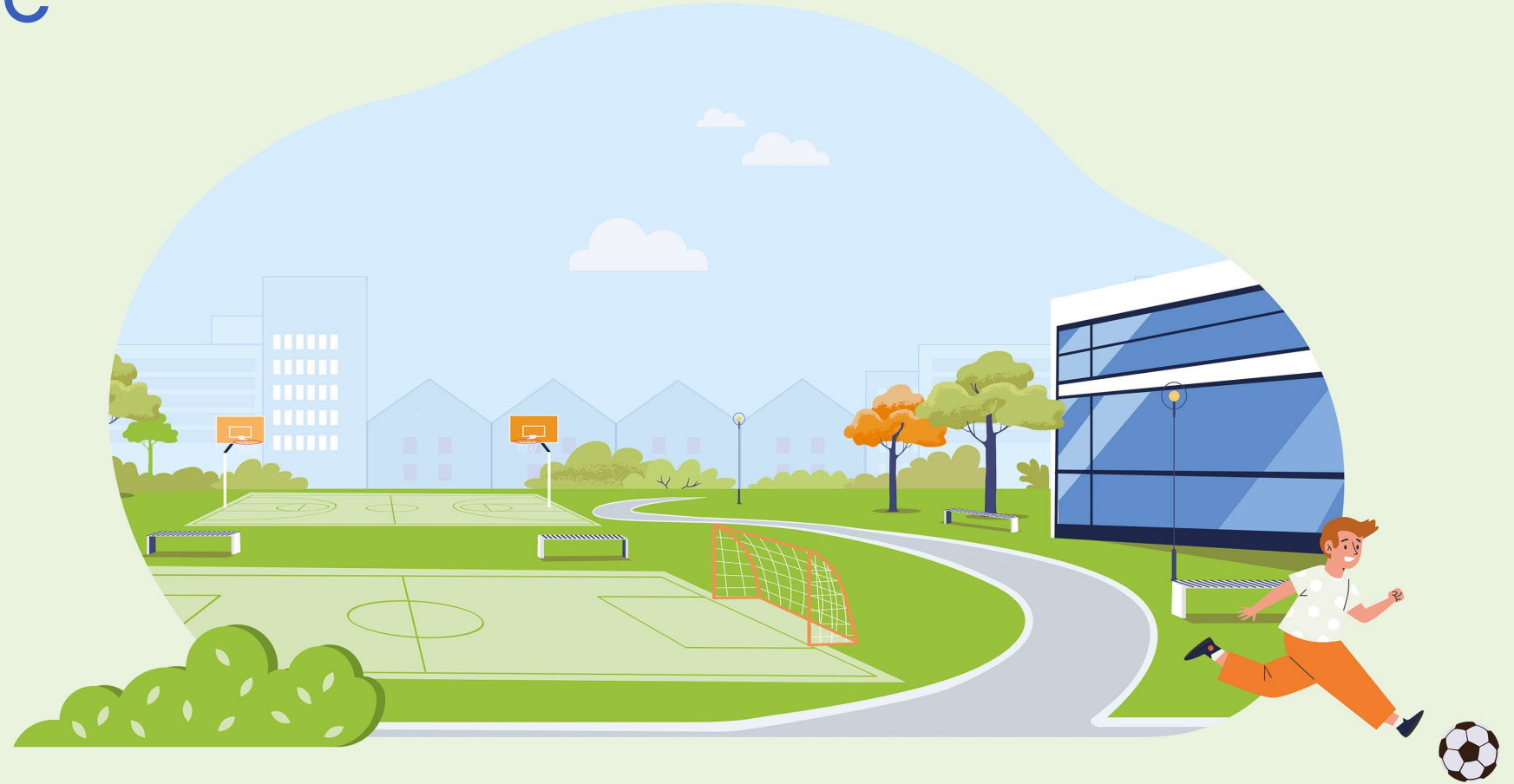


### Legend

- Road Network
- Electoral District
- School
  - a. Beaconsfield Elementary
  - b. John-F. Kennedy School
  - c. Beacon Hill Elementary
  - d. Christmas Park Elementary
  - e. Saint-Edmund Elementary
  - f. Saint-Rémi Elementary
  - g. Sherbrooke Academy Jr
  - h. Sherbrooke Academy Sr
  - i. Beaconsfield High School
- Neighborhood Park
- Community Park
- Municipal Park
- Green Space
- Waterfront Park
- Dog Park

- |                    |                          |
|--------------------|--------------------------|
| 1. Devon           | 22. St-James             |
| 2. Rockhill        | 23. Sweetbriar           |
| 3. St-Andrew       | 24. Briarwood            |
| 4. Darbyson        | 25. Willowbrook          |
| 5. Lakeview        | 26. Jasper               |
| 6. Angell          | 27. Taywood              |
| 7. Woodland        | 28. Biscayne             |
| 8. James-Armstrong | 29. Applewood            |
| 9. St-Louis        | 30. Bruton               |
| 10. Christmas      | 31. Royal                |
| 11. Meadowbrook    | 32. Shannon              |
| 12. Brookside      | 33. Beaconsfield Heights |
| 13. City Lane      | 34. Stephen-Walsh        |
| 14. Highridge      | 35. Dog park             |
| 15. Wildtree       | 36. Henri-Jarry          |
| 16. Parc des Héros | 37. Montrose             |
| 17. Centennial     | 38. Jean-Charlebois      |
| 18. Drummond       | 39. Windermere           |
| 19. Rutland        |                          |
| 20. Beacon Hill    |                          |
| 21. Prairie        |                          |

# ANALYSIS AND DIAGNOSTIC



## INVENTORY — 39 PARKS AND GREEN SPACES

### 1. Equipment, surface and furniture conditions

- Good
- Fair
- Poor

### 2. Qualitative assessment of user experience

- Universal accessibility
- Relaxation areas
- Tree cover
- Shaded area
- Nuisance
- Vandalism

### 3. Inspection of children's play areas

- Performed by LaboSport
- Compliance to CSA-Z614 standard

## ANALYSIS OF OFFERING

All the data collected was analyzed and presented in the form of **tables**, **figures** and **maps**.

The supply analysis **provides relevant data** on the current parks and green spaces offerings.



## ANALYSIS OF OFFERING

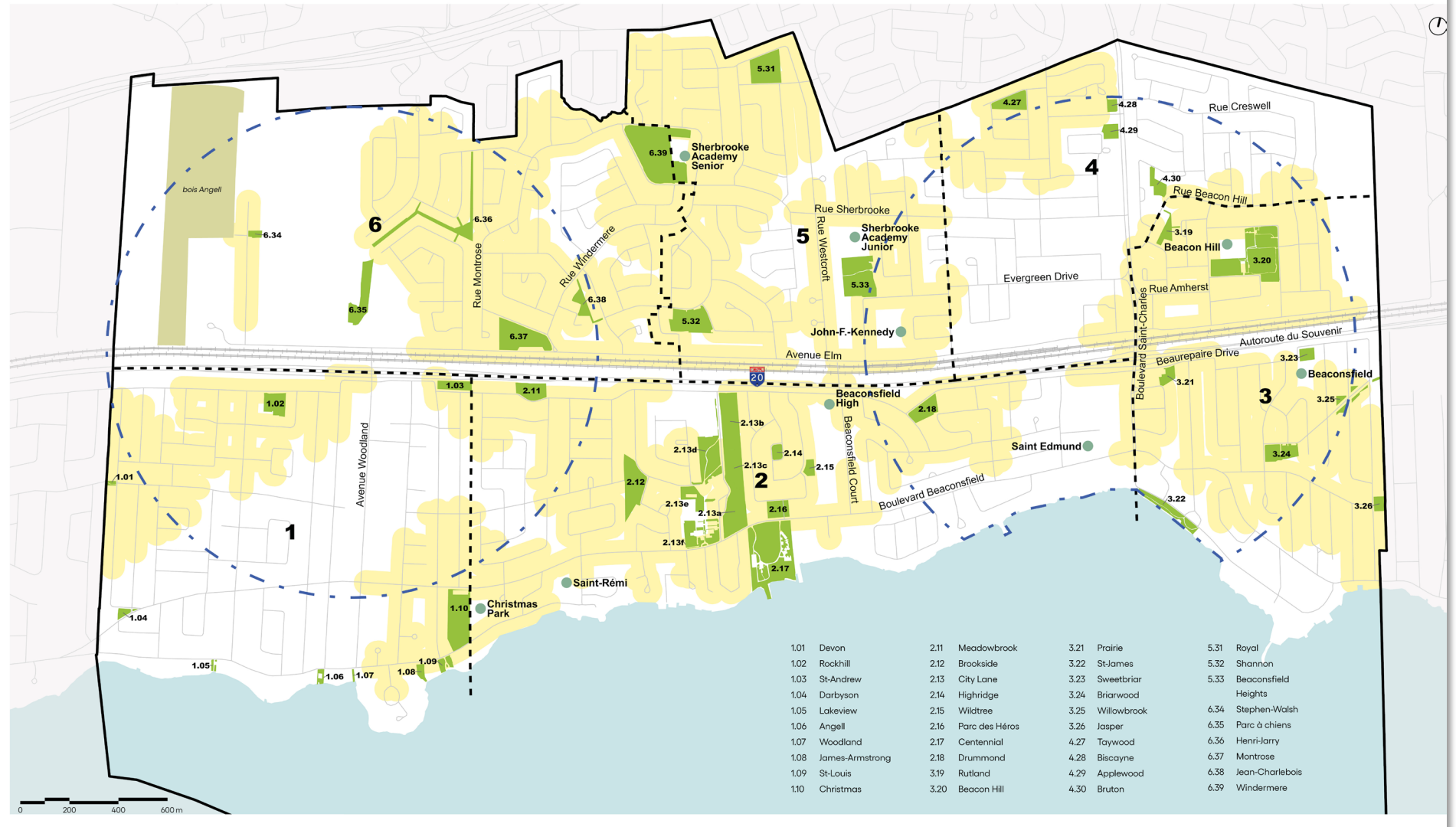
> Unequal offering from one district to the next

Districts	Population in 2021		Proportion of Hectares of Parks and Green Spaces		Hectares / 1000 Residents
<b>1</b>	2 926	15 %	4,1	10 %	<b>1,4 ha</b>
<b>2</b>	3 649	19 %	14,9	36 %	<b>4,1 ha</b>
<b>3</b>	2 776	14 %	6,7	16 %	<b>2,4 ha</b>
<b>4</b>	3 007	16 %	1,8	4 %	<b>0,6 ha</b>
<b>5</b>	2 961	15 %	4,9	12 %	<b>1,7 ha</b>
<b>6</b>	3 958	21 %	9,1	22 %	<b>2,3 ha</b>
<b>Total</b>	<b>19 277</b>	<b>100 %</b>	<b>41,5 ha</b>	<b>100 %</b>	<b>2,2 ha</b>

# ANALYSIS OF OFFERING

> Good service-area coverage

Desserte de proximité - Équipements générant une desserte de 400 mètres





## IDENTIFICATION OF USER NEEDS AND EXPECTATIONS

- > Discussion workshop with organizations, associations and clubs – May 1, 2024
- > Results of the study of needs and expectations for culture, sports, community life, recreation and healthy living (2023)



## CURRENT APPRECIATION OF PARKS AND GREEN SPACES

What do you like **MOST** about Beaconsfield's parks and green spaces?



What do you like **LEAST** about Beaconsfield's parks and green spaces?



## MAIN IMPROVEMENTS DESIRED FOR SPORTS AND RECREATIONAL FACILITIES

- > Infrastructure modernization and improvement (playing fields and supporting services)
- > Renewal of end-of-life assets
- > Spatial reorganization of certain playing fields
- > Improving infrastructure accessibility
- > Addition of multi-purpose and multi-generational facilities



## FOUR KEY ISSUES

### **Key Issue 1**

Planning the development of parks and green spaces according to demographic projections

### **Key Issue 3**

Resilience to climate change

### **Key Issue 2**

The maintenance and the renewal of assets

### **Key Issue 4**

Optimisation of the current offering

# VISION AND GUIDING PRINCIPLES



## VISION

**In 2035,  
Beaconsfield's parks  
and green spaces  
are accessible and  
inclusive, reflecting  
modernity and  
innovation.**

Adapted to the varied and changing needs of the community, they are well equipped and versatile. These spaces, which are constantly evolving, are an integral part of our living environments and are true convivial meeting places. They offer a variety of vocations and activities and are actively contributing to the territorial resilience of Beaconsfield.



# GUIDING PRINCIPLES

1

Upgrade and develop service-area coverage

Plan for the renewal of assets and their long-term maintenance

2

3

Increase the attractiveness and the conviviality of parks

Ensure versatility, adaptability and the intergenerationality of sports and recreation facilities

4

Make parks leading actors in implementing climate resilience strategies

6

5

Develop cultural, social and community vocations in parks

# ACTION PLAN





## METHODOLOGY

### > **Three workshop sessions**

- > 1 internal workshop at BC2 with urban planners and landscape architects
- > 1 workshop with the City's Culture and Leisure Department
- > 1 workshop with the Culture and Leisure, Public Works and Urban Planning departments

## MAJOR PROJECTS

**Flagship project:  
IMAGINE Centennial.**

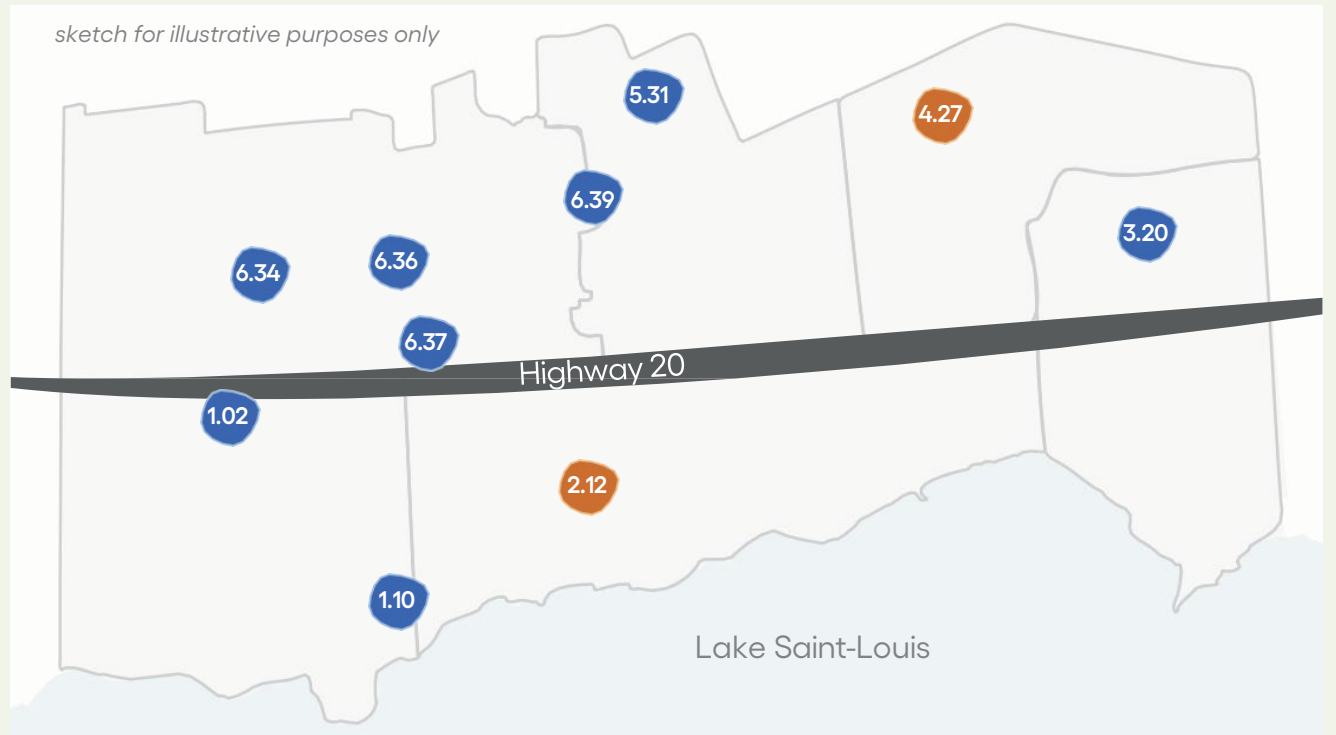
**Six major strategies  
are planned.**

- 01 Refreshing and renewing children’s play areas
- 02 Planning for the integration of new parks
- 03 Creating a sports and recreation hub at City Lane Park
- 04 Developing winter hubs
- 05 Enhancing the waterfront character of the city
- 06 Providing appropriate support services in community and municipal parks

# Refreshing and Renewing Children’s Play Areas

## THREE STRATEGIES

- > Complete redevelopment
- > Major upgrade and maintenance
- > Upgrade and minor maintenance



### Guiding Principles

- Upgrade and develop service-area coverage
- Plan for the renewal of assets and their long-term maintenance
- Increase the attractiveness and the conviviality of parks
- Ensure versatility, adaptability and the intergenerationality of sports and recreation facilities
- Develop cultural, social and community vocations in parks
- Make parks leading actors in implementing climate resilience strategies

### Complete redevelopment

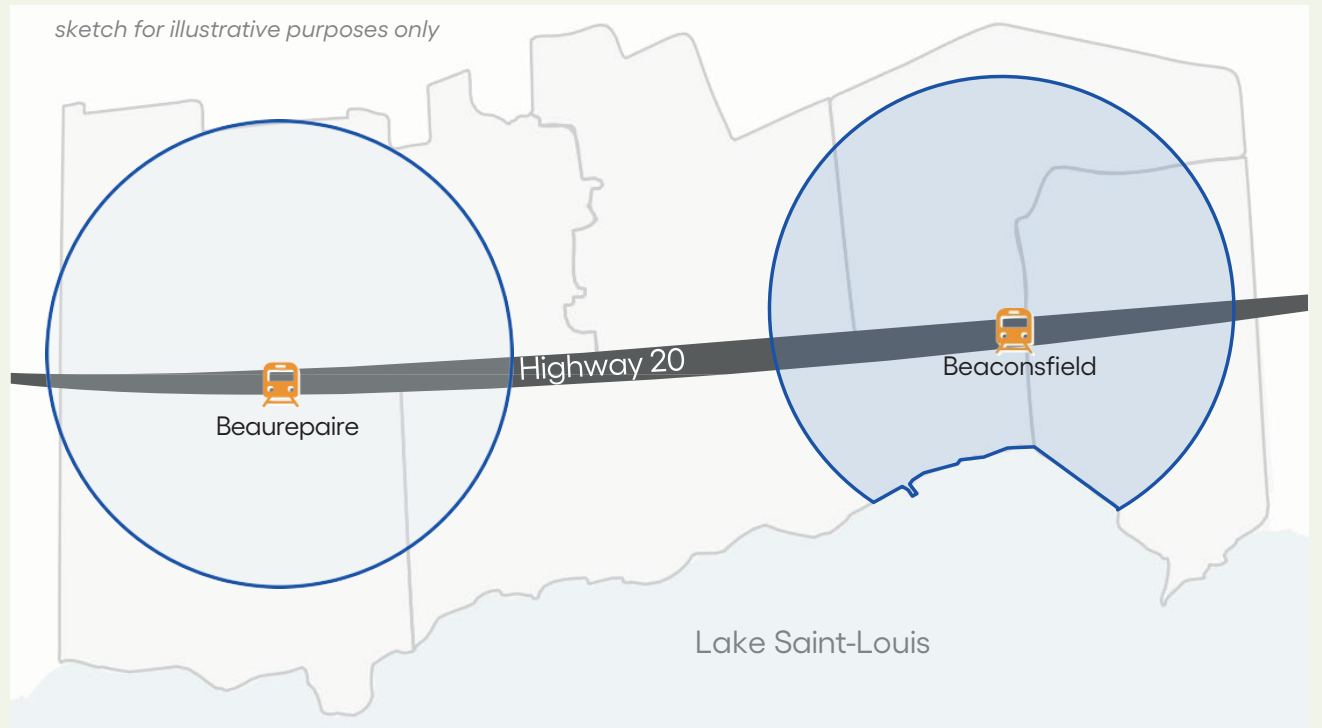
- 1.02 Rockhill
- 1.10 Christmas
- 3.20 Beacon Hill
- 5.31 Royal
- 6.34 Stephen-Walsh
- 6.36 Henri-Jarry
- 6.37 Montrose
- 6.39 Windermere

### Major upgrade and maintenance

- 2.12 Brookside
- 4.27 Taywood

## Planning for the Integration of New Parks

- > New community parks in TOD areas
- > Consistency with planning tools (Planning Program) and acquisition strategies



### Guiding Principles

- Upgrade and develop service-area coverage
- Plan for the renewal of assets and their long-term maintenance
- Increase the attractiveness and the conviviality of parks
- Ensure versatility, adaptability and the intergenerationality of sports and recreation facilities
- Develop cultural, social and community vocations in parks
- Make parks leading actors in implementing climate resilience strategies

### Targeted sector

#### Bearepaire Station TOD :

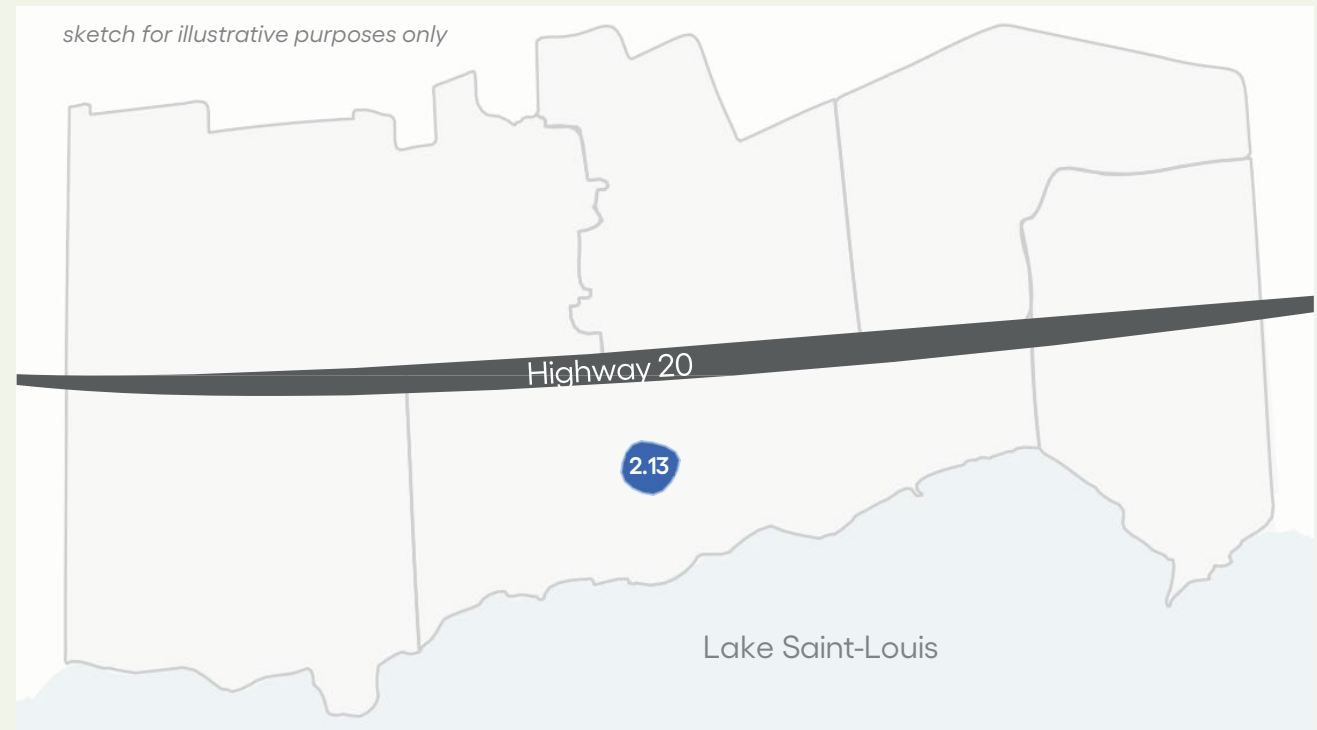
- 1 park south of the highway

#### Beaconsfield Station TOD :

- 1 park south of the highway
- 1 park north of the highway

## Creating a Sports and Recreation Hub at City Lane Park

- > In line with the Centennial Park project



### Guiding Principles

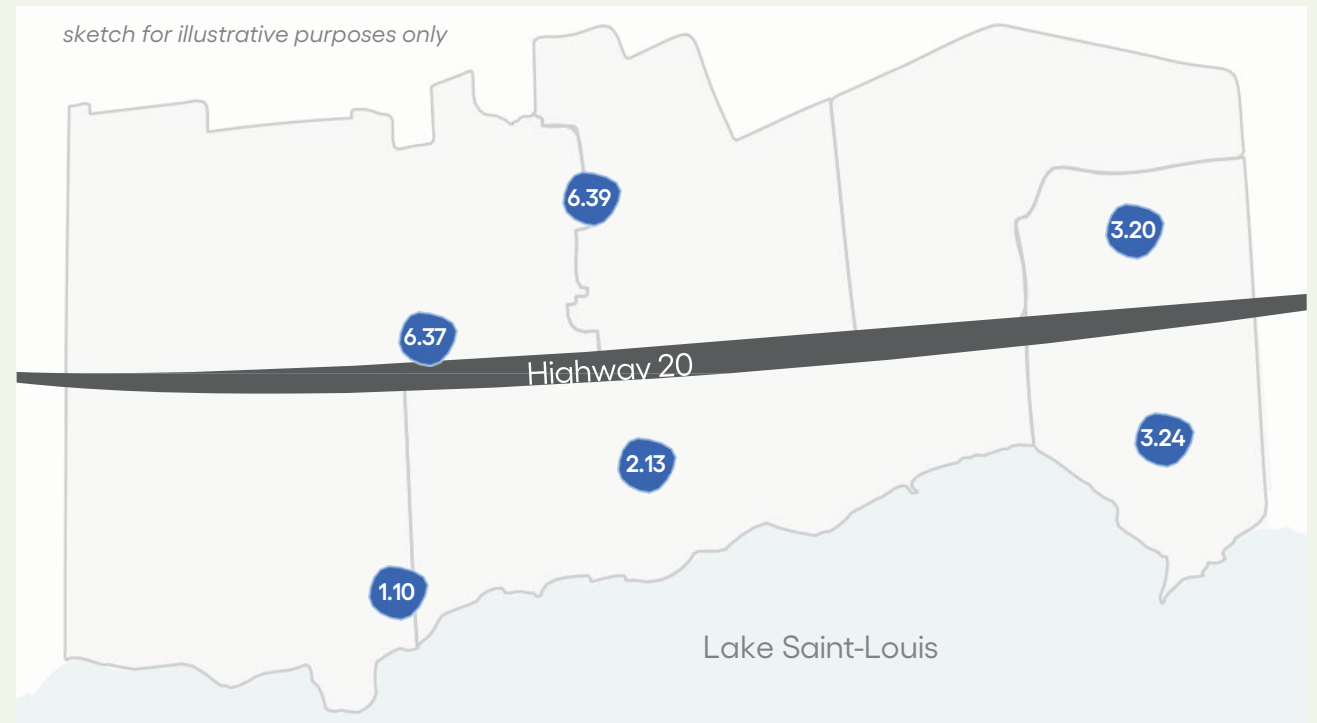
- Upgrade and develop service-area coverage
- Plan for the renewal of assets and their long-term maintenance
- Increase the attractiveness and the conviviality of parks
- Ensure versatility, adaptability and the intergenerationality of sports and recreation facilities
- Develop cultural, social and community vocations in parks
- Make parks leading actors in implementing climate resilience strategies

### Targeted park

- 2.13 City Lane

## Developing Winter Hubs

- > Maintain existing skating rinks in winter hubs
- > Concentration of sports and recreational activities in winter hubs



### Guiding Principles

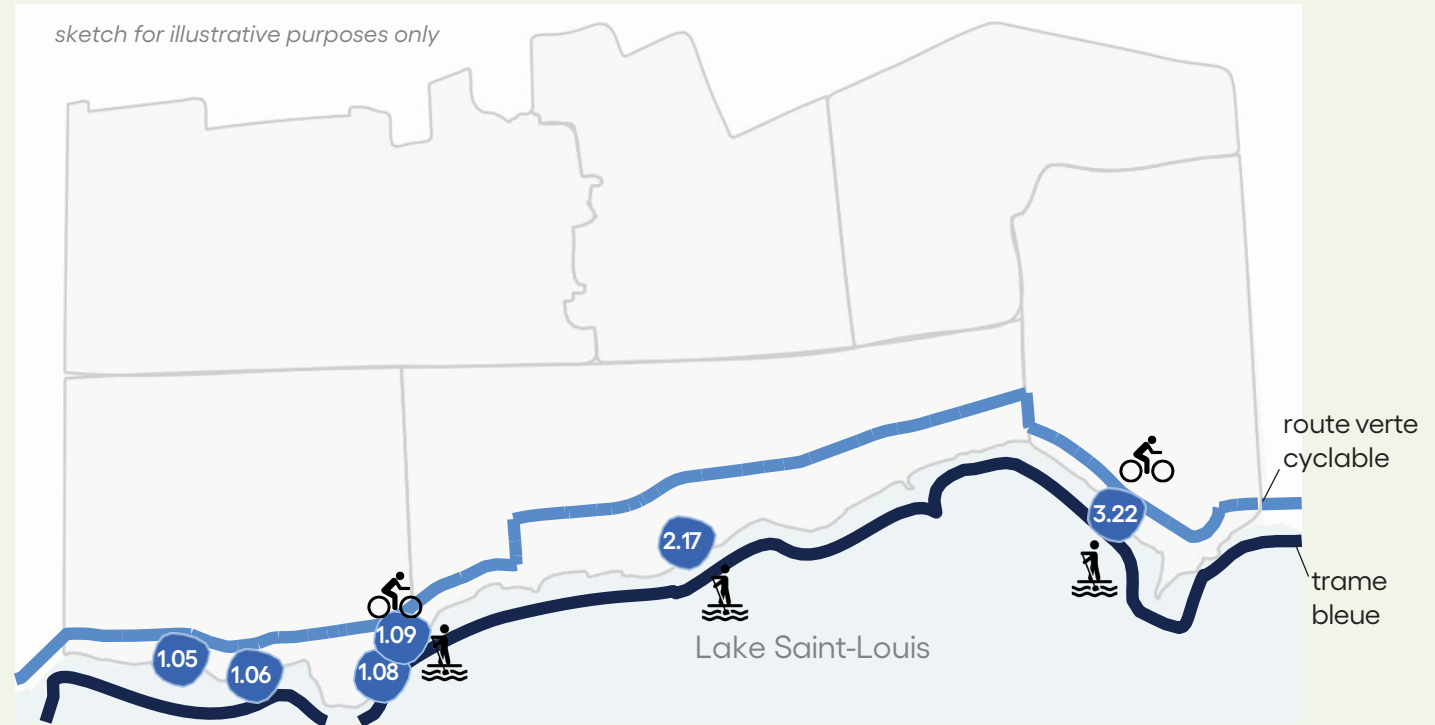
- Upgrade and develop service-area coverage
- Plan for the renewal of assets and their long-term maintenance
- Increase the attractiveness and the conviviality of parks
- Ensure versatility, adaptability and the intergenerationality of sports and recreation facilities
- Develop cultural, social and community vocations in parks
- Make parks leading actors in implementing climate resilience strategies

### Targeted parks

- 1.10 Christmas
- 2.13 City Lane
- 3.20 Beacon Hill
- 3.24 Briarwood
- 6.37 Montrose
- 6.39 Windermere

## Enhancing the Waterfront Character of the City

- > Green Corridor
- > Blue corridor



### Guiding Principles

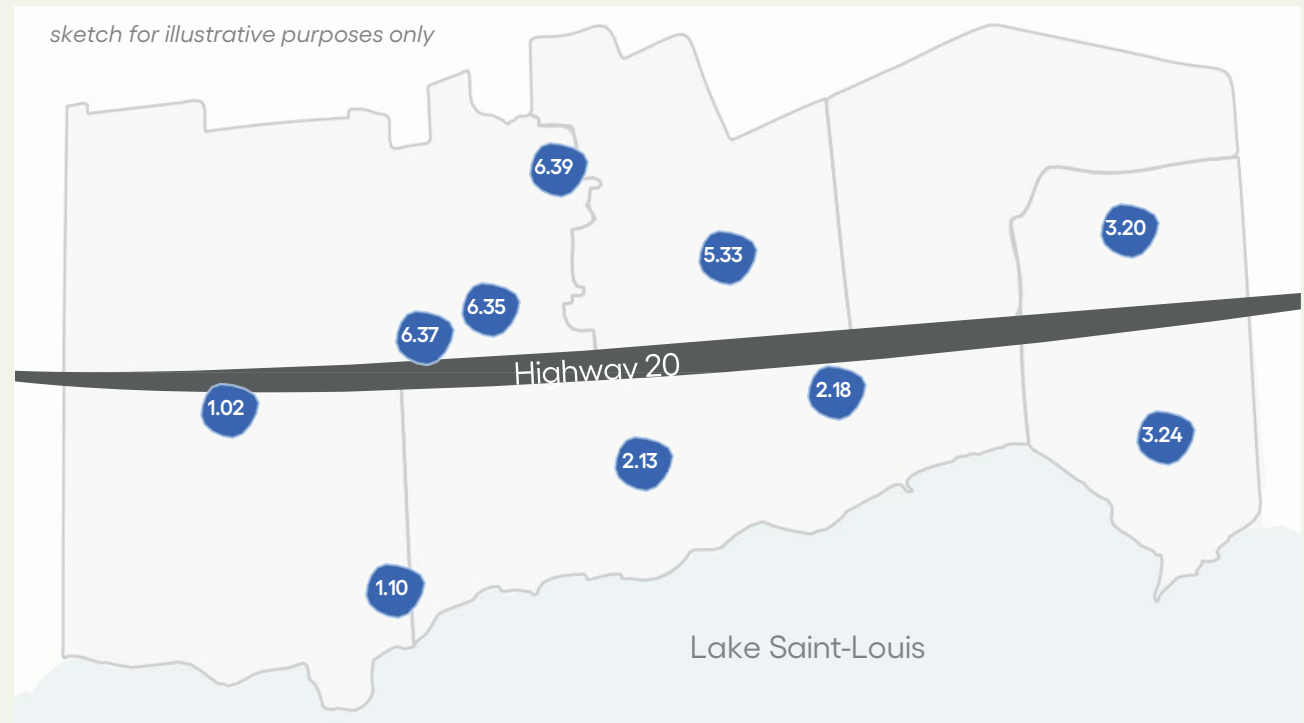
- Upgrade and develop service-area coverage
- Plan for the renewal of assets and their long-term maintenance
- Increase the attractiveness and the conviviality of parks
- Ensure versatility, adaptability and the intergenerationality of sports and recreation facilities
- Develop cultural, social and community vocations in parks
- Make parks leading actors in implementing climate resilience strategies

### Targeted parks

- 1.05 Lakeview
- 1.06 Angell
- 1.08 James-Armstrong
- 1.09 St-Louis
- 2.17 Centennial
- 3.22 St-James

## Providing Appropriate Support Services in Community and Municipal Parks

- > An adequate level of service in community and municipal parks



### Guiding Principles

- Upgrade and develop service-area coverage
- Plan for the renewal of assets and their long-term maintenance
- Increase the attractiveness and the conviviality of parks
- Ensure versatility, adaptability and the intergenerationality of sports and recreation facilities
- Develop cultural, social and community vocations in parks
- Make parks leading actors in implementing climate resilience strategies

### Targeted parks

- 1.02 Rockhill
- 1.10 Christmas
- 2.13 City Lane
- 2.18 Drummond
- 3.20 Beacon Hill
- 3.24 Briarwood
- 5.33 Beaconsfield Heights
- 6.35 Dog park
- 6.37 Montrose
- 6.39 Windermere



# PRELIMINARY TIMELINE

Targeted Park	Short term 0 - 3 years	Medium term 4 - 6 years	Long term 7 - 10 years	Very long term 10 years +
1.02 Rockhill		●		
1.05 Lakeview				●
1.09 St-Louis				●
1.10 Christmas		●		
2.12 Brookside		●		
2.13 City Lane			●	
2.17 Centennial*		●		●
2.18 Drummond			●	
3.20 Beacon Hill	●			
3.22 St-James				●
3.23 Sweetbriar				●
3.24 Briarwood		●		
3.26 Jasper			●	
4.27 Taywood	●			
4.28 Biscayne				●
4.29 Applewood				●
5.31 Royal			●	
5.33 Beaconsfield Heights		●		
6.34 Stephen-Walsh	●			
6.35 Dog Park			●	
6.36 Henri-Jarry		●		
6.37 Montrose				●
6.39 Windermere	●			
New pumptrack		●		
Wifi and connected work areas				●
Green spaces			●	

● **Minor investment**  
< 500 000 \$

● **Important investment**  
500 000 \$ to 3 M\$

● **Major investment**  
> 3 M\$

## THE PARKS AND GREEN SPACES MASTERPLAN — A TOOL FOR THE FUTURE

- > Strategic planning to coordinate and prioritize future actions
- > Guide and decision-making tool for years to come



## **MONTREAL**

300-85, rue Saint-Paul Ouest  
Montréal (Québec) H2Y 3V4  
514 507-3600

## **QUÉBEC**

302-511, rue Saint-Joseph Est  
Québec (Québec) G1K 3B7  
418 914-1508

[info@groupebc2.com](mailto:info@groupebc2.com)  
[groupebc2.com](http://groupebc2.com)